



Bexley Wellbeing
Partnership

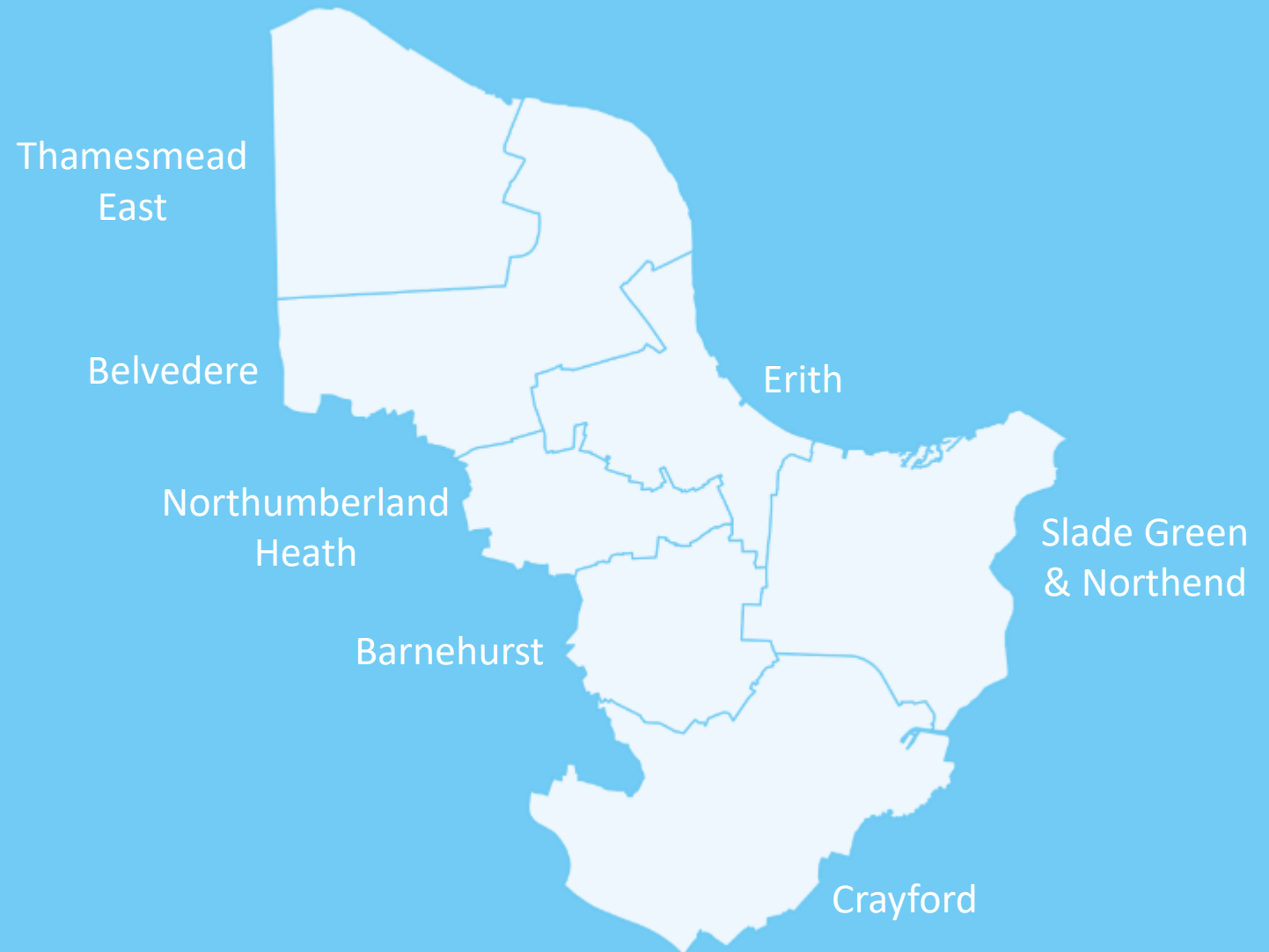
Frailty in North Bexley Local
Care Network

North Bexley Local Care Network is comprised of seven wards in the North of the borough

Bexley Wellbeing Partnership (BWP) brings together 17 local partner organisations with a shared goal of supporting and improving the health, care and wellbeing of local people and communities. The BWP is divided geographically into three Local Care Networks (LCNs): North Bexley, Clocktower, and Frogna.

North Bexley Local Care Network is located to the North of the borough, comprising the electoral wards:

- Thamesmead East
- Belvedere
- Erith
- Northumberland Heath
- Barnhurst
- Slade Green & Northend
- Crayford

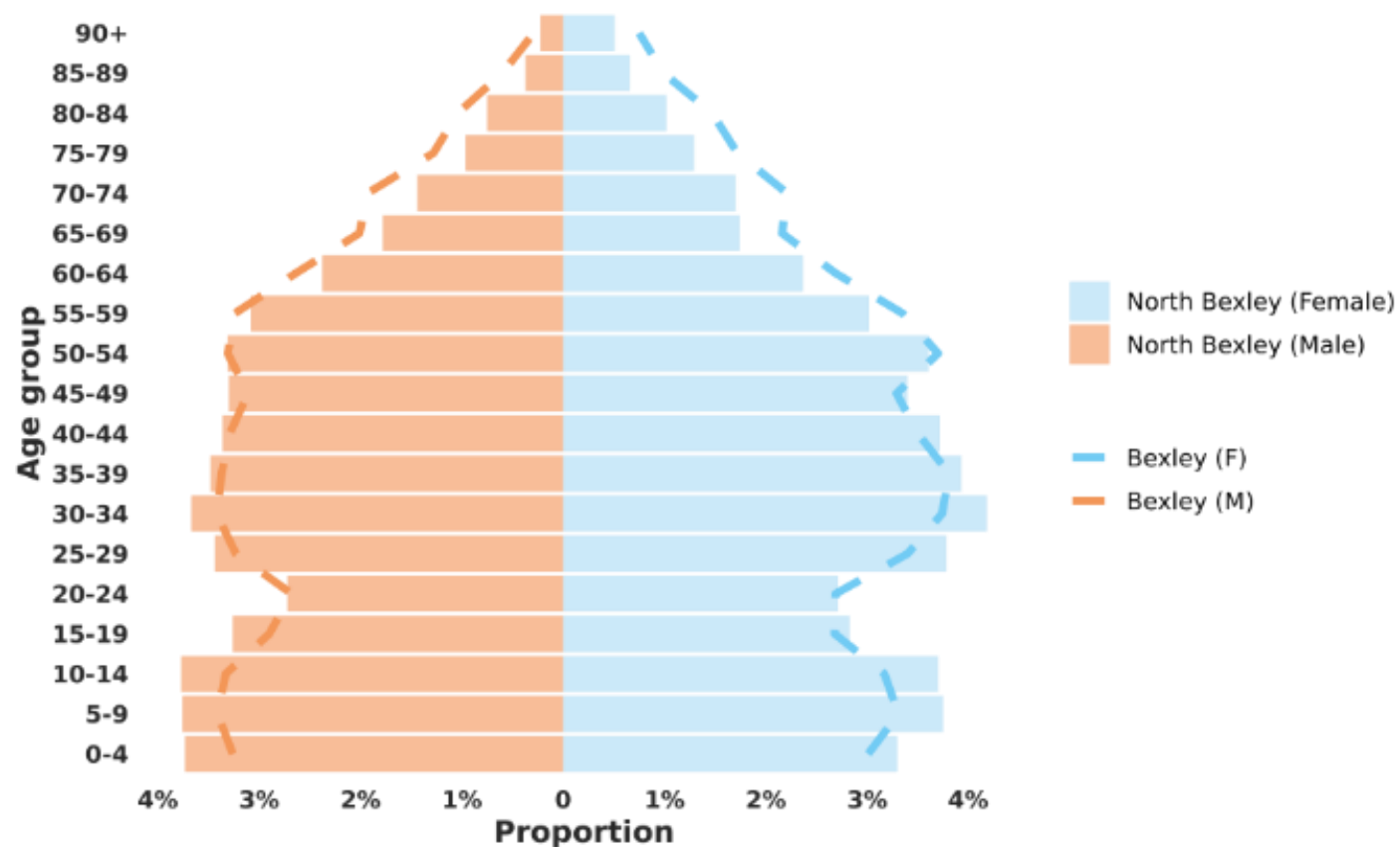


North Bexley has the youngest age profile of Bexley's local care networks

North Bexley is the most populous LCN, and it has a proportionally younger population than the wider borough.

North Bexley has more young children aged 0-15 than the England average, and like all LCN's in Bexley it also has young adults aged 16-24, than the England average.

Age is the strongest risk factor for frailty, and North Bexley has a significantly lower proportion of residents aged 65+ and 85+ than the England average.

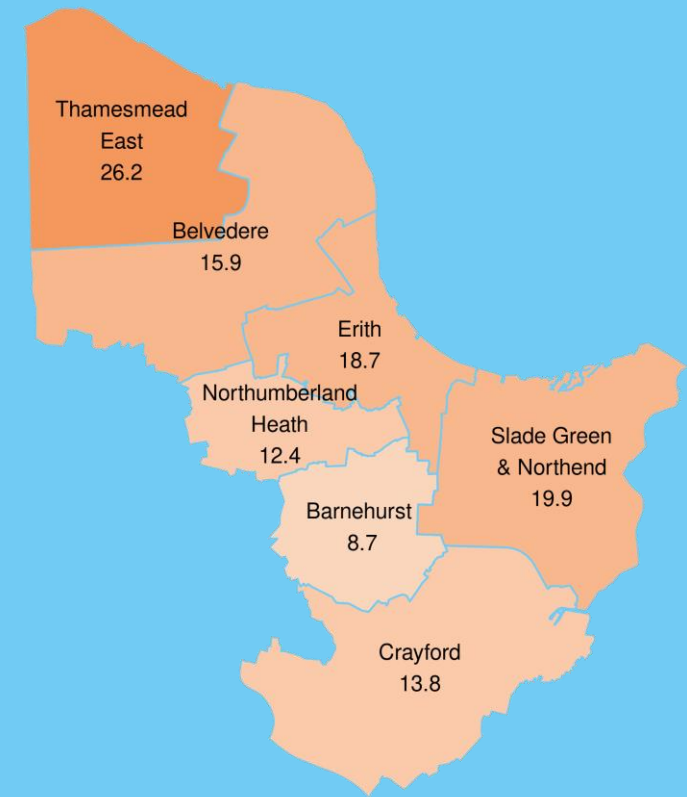
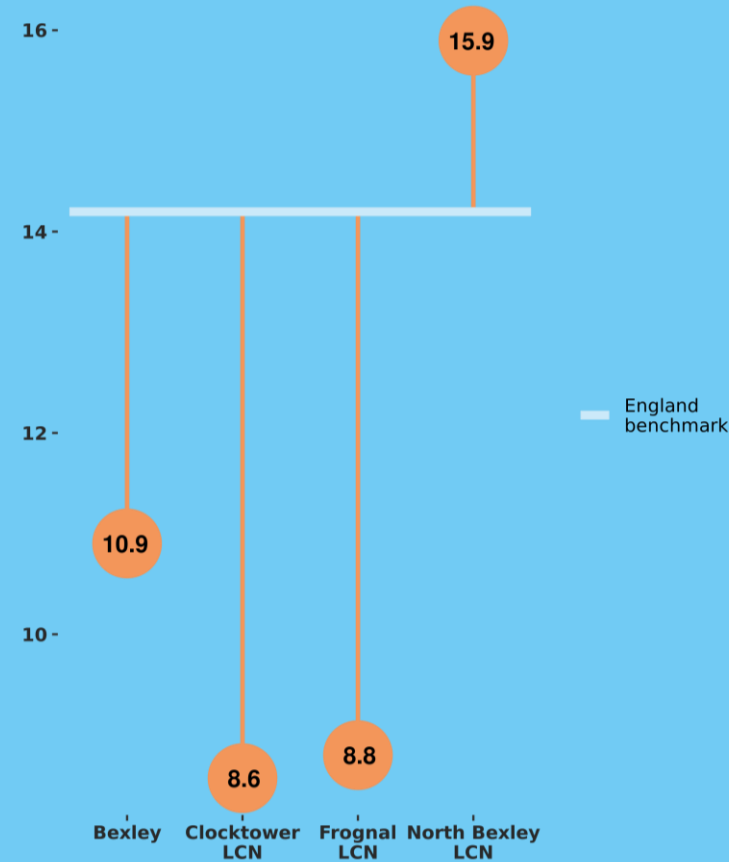


There are inequalities in income deprivation in North Bexley

Deprivation is another predictor of frailty, and within North Bexley there are wide inequalities.

The Income Deprivation Affecting Older People Index (IDAOPI) measures the proportion of all those aged 60 or over who experience income deprivation.

Whilst North Bexley on average has a higher proportion of older people affected by income deprivation than the England and Bexley averages, there is wide variation at ward level with Thamesmead East experiencing three times the level of Barnehurst.

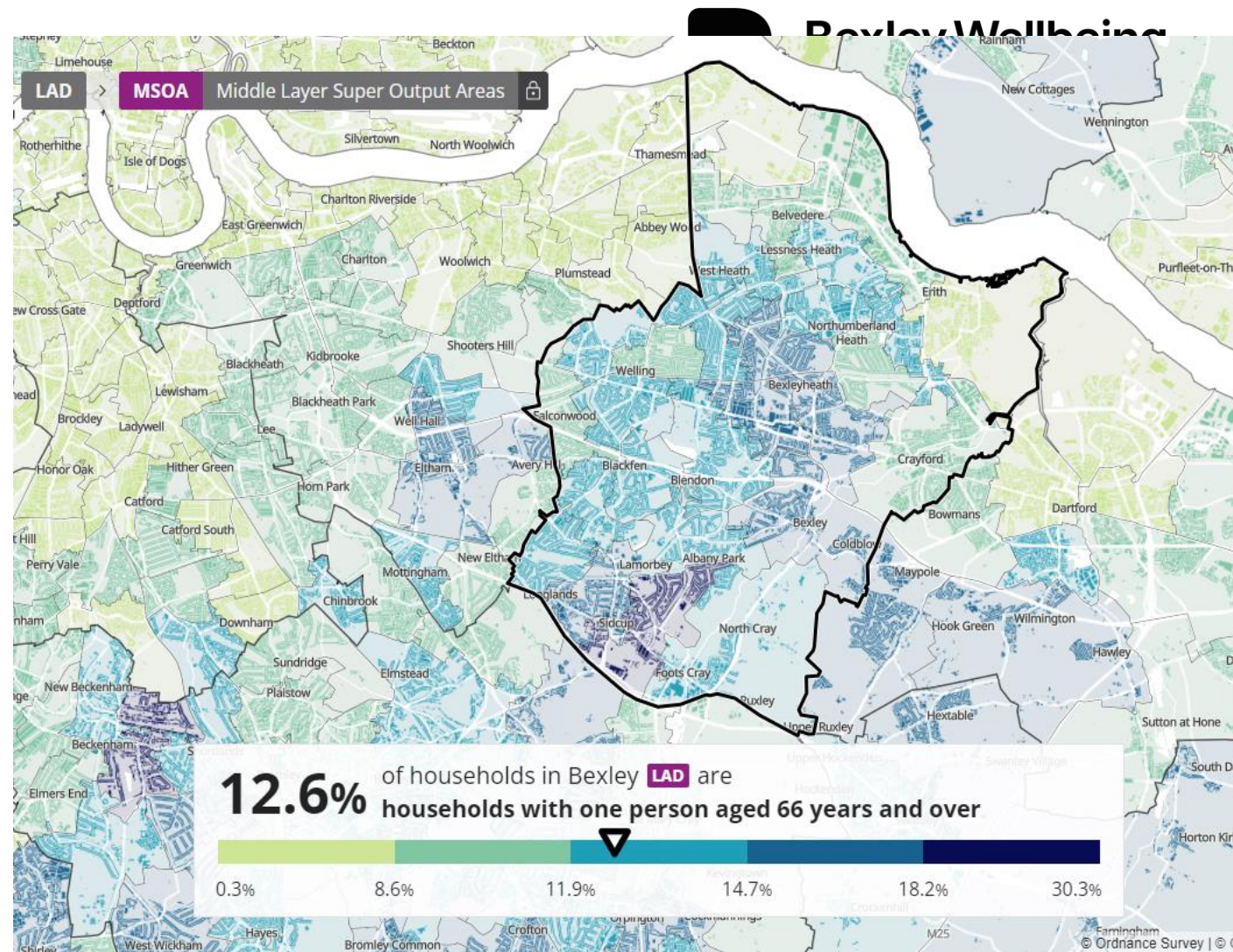


There is a cluster of older people living alone in North Bexley

Loneliness is strongly associated with an increased frailty trajectory.

In North Bexley there is a cluster of older people age 66+ living alone, centred in Northumberland Heath.

The cluster is visible as the dark blue neighbourhoods on the map:



Legend

Higher than England
Significantly higher than England
Lower than England
Significantly lower than England
Same as England

	England Benchmark	Bexley	Clocktower	Frognal	North Bexley
	2021 Census	2021 Census	2021 Census	2021 Census	2021 Census
Percentage of the total resident population who are 50 to 64 years of age	▲ 19.4	▲ 19.3	▲ 20.0	▲ 19.7	▲ 18.3
Percentage of the total resident population who are 65 and over	▼ 18.4	▲ 16.6	▲ 18.7	▲ 19.9	▲ 12.6
Percentage of the total resident population aged 85 and over	▼ 2.4	▼ 2.4	▼ 2.8	▼ 3.2	▼ 1.5
Older people living alone, % of people aged 66 and over who are living alone	▼ 29.9	▼ 30.6	▼ 28.5	▼ 30.9	▼ 33.0
	Latest	Latest	Latest	Latest	Latest
Older people in poverty: Income deprivation affecting older people Index (IDAOPI)	14.2	10.9	8.6	8.8	15.9
Modelled estimates: proportion of households in fuel poverty based on LILEE (%)	▶ 13.1	▼ 9.1	▲ 8.5	▼ 8.9	▼ 9.7

In sum: Although North Bexley is the only local care network with lower resident population aged 50+ compared to England, it has the highest percentage compared to other LCN areas of older people living alone (2021 Census), and the highest rate of older people in poverty and deprivation (yellow figures in the table).

Recent trend

▲ Increasing (change from previous Census)
▶ No change
▼ Decreasing (change from previous Census)

North Bexley is estimated to have the lowest prevalence of frailty in Bexley

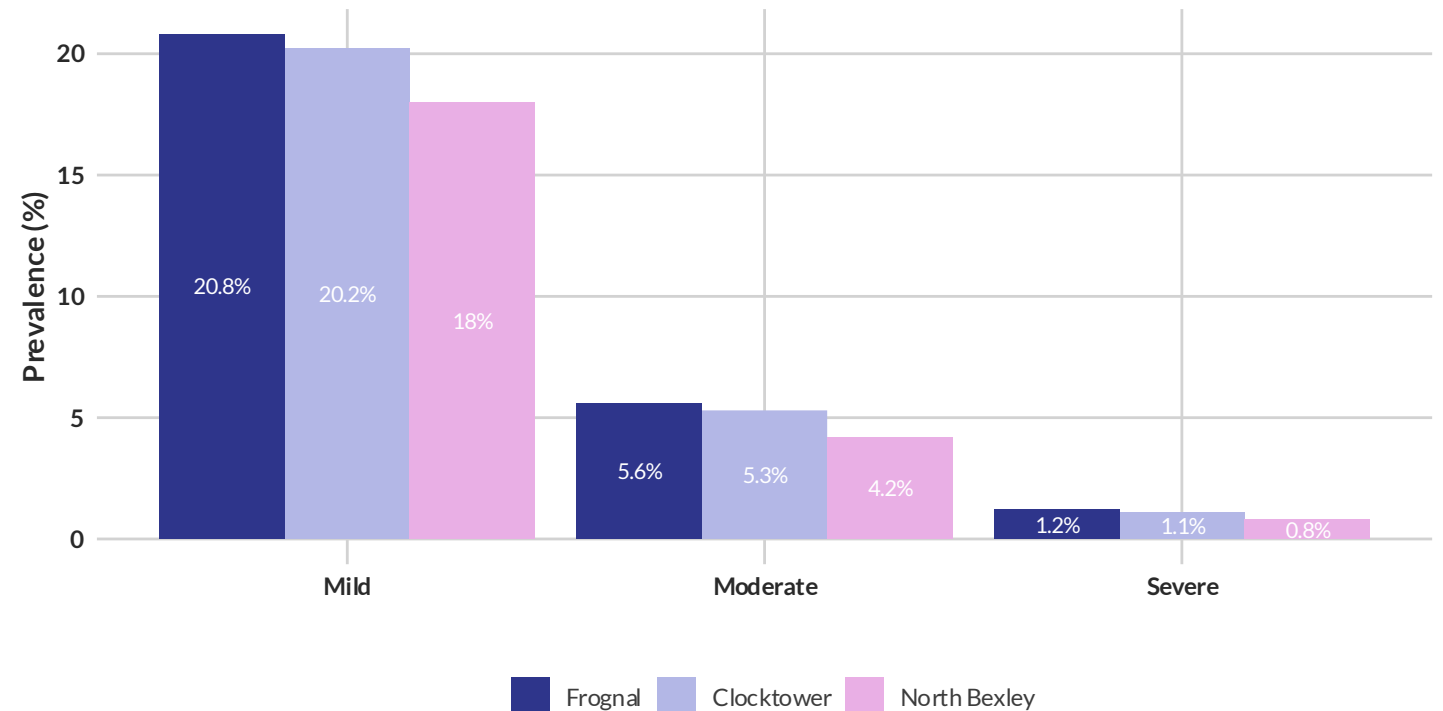
By applying robust research¹ based prevalence estimates to the age and sex structure of the Bexley population, it is possible to estimate the overall prevalence of frailty in each local care network.

North Bexley is estimated to have the lowest prevalence of frailty in residents aged 50+ in all severity categories:

- Less than 1 in 5 residents 50+ with mild frailty
- Less than 1 in 20 residents 50+ with moderate frailty
- Less than 1 in 100 residents 50+ with severe frailty

Estimated frailty prevalence by severity, age 50+

Bexley Local Care Networks



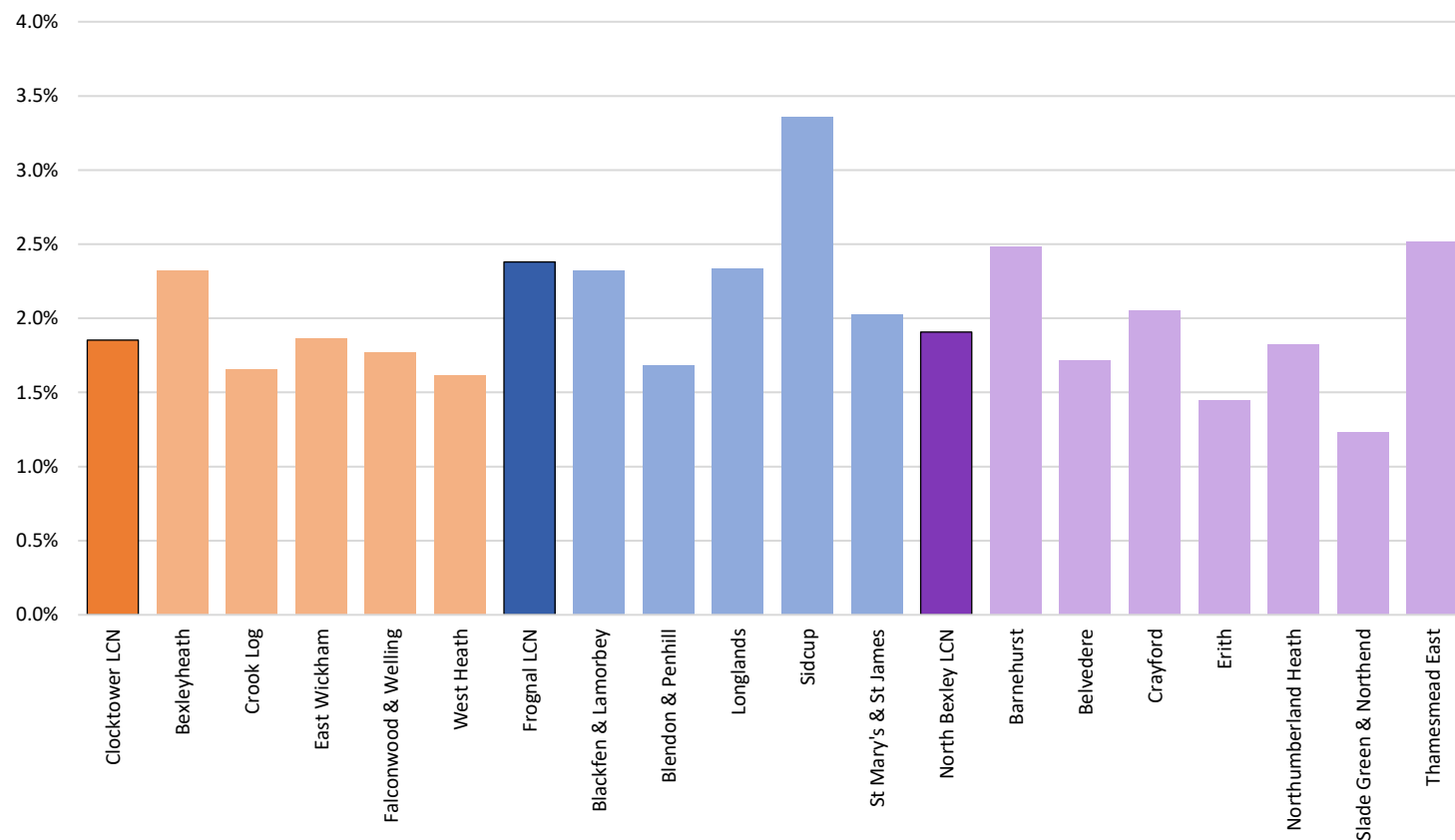
Source: Oxford RCOG, ONS

¹Walsh et al. Age and Ageing, Volume 52, Issue 5, May 2023, afad058,

The rate of emergency admissions for falls in North Bexley corroborates with higher levels of deprivation and the estimated levels of frailty.

In 2023/24 North Bexley also had second highest rate of emergency admissions for falls in the borough, with higher rate of falls occurring the more deprived parts of Thamesmead East, and Barnehurst.

Rate of emergency hospital admissions for falls in ages 65+ (per 100 population) by LCN & Ward, 2023/24



Address

2 Watling Street

Bexleyheath

DA6 7AT

Contact

+44 (0) 207 123 4567

info@bexleywellbeing.org

bexleywellbeing.org