



Bexley Wellbeing
Partnership

Frailty in Clocktower Local
Care Network

Clocktower Local Care Network is comprised of five wards in the Northwest & Central parts of the borough

Bexley Wellbeing Partnership (BWP) brings together 17 local partner organisations with a shared goal of supporting and improving the health, care and wellbeing of local people and communities. The BWP is divided geographically into three Local Care Networks (LCNs): North Bexley, Clocktower, and Frognal.

Clocktower Local Care Network comprises the electoral wards:

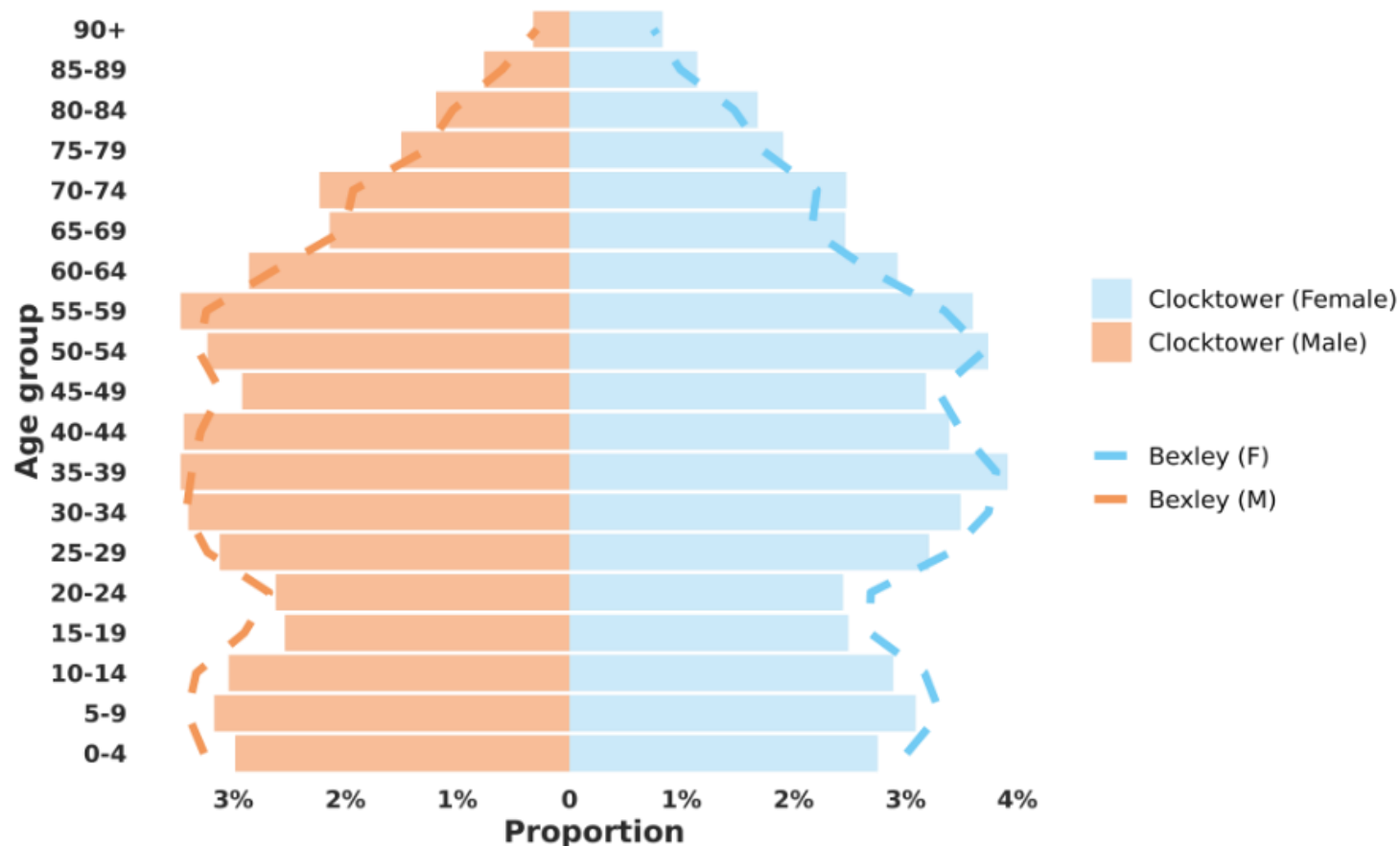
- East Wickham
- Falconwood & Welling
- West Heath
- Crook Log
- Bexleyheath



Clocktower has a similar age profile to Bexley as a whole

Age is the strongest risk factor for frailty, and Clocktower has a higher proportion of residents aged 85+ than the England average.

Clocktower has less young adults aged 16-24 than the London and England average.

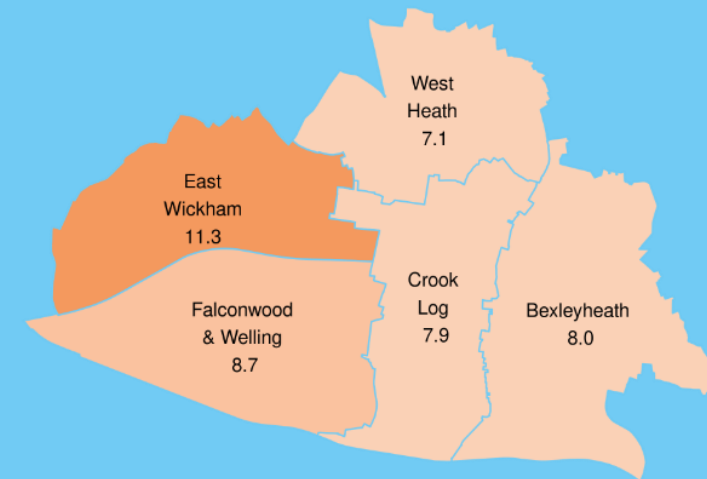
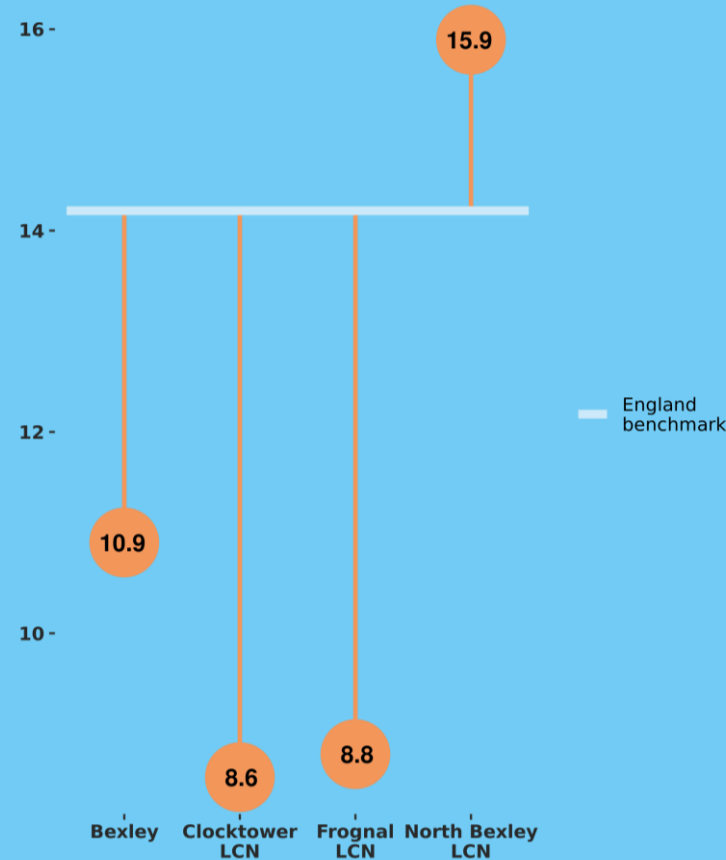


There are inequalities in income deprivation in Clocktower

Deprivation is another predictor of frailty, and within Clocktower there are inequalities.

The Income Deprivation Affecting Older People Index (IDAOPI) measures the proportion of all those aged 60 or over who experience income deprivation.

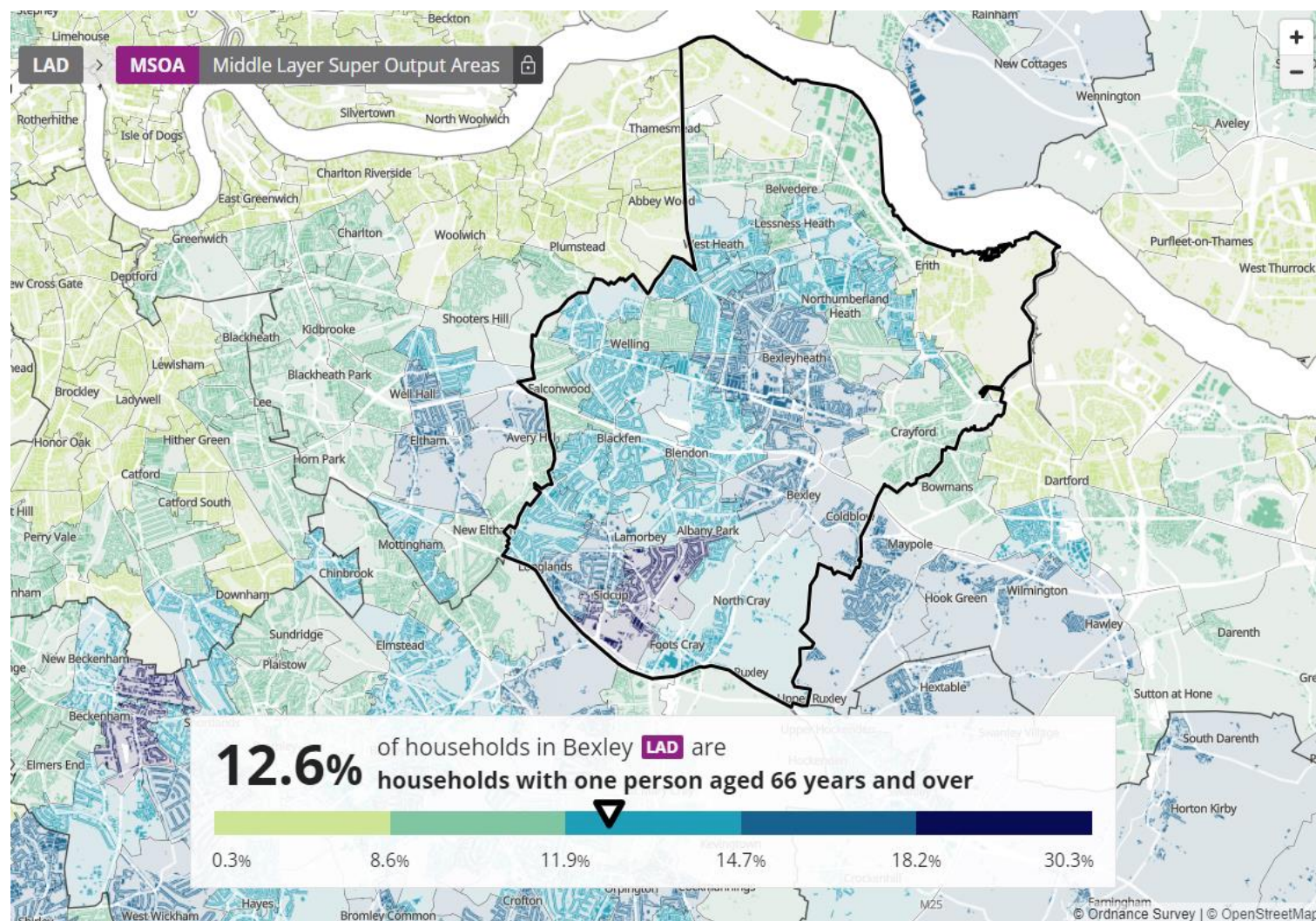
Whilst Clocktower on average has a lower proportion than the England and Bexley averages, there is variation at ward level, with East Wickham experiencing a higher level than the Bexley average.



There is a cluster of older people living alone in Clocktower

Loneliness is strongly associated with an increased frailty trajectory.

In Clocktower there is a cluster of older people age 66+ living alone, in Bexleyheath and parts of West Heath. The cluster is visible as the dark blue neighbourhoods on the map:



Legend

Higher than England
Significantly higher than England
Lower than England
Significantly lower than England
Same as England

	England Benchmark
	2021 Census
Percentage of the total resident population who are 50 to 64 years of age	▲ 19.4
Percentage of the total resident population who are 65 and over	▼ 18.4
Percentage of the total resident population aged 85 and over	▼ 2.4
Older people living alone, % of people aged 66 and over who are living alone	▼ 29.9
	Latest
Older people in poverty: Income deprivation affecting older people Index (IDAOPI)	14.2
Modelled estimates: proportion of households in fuel poverty based on LILEE (%)	▶ 13.1

Bexley	Clocktower	Frognal	North Bexley
2021 Census	2021 Census	2021 Census	2021 Census
▲ 19.3	▲ 20.0	▲ 19.7	▲ 18.3
▲ 16.6	▲ 18.7	▲ 19.9	▲ 12.6
▼ 2.4	▼ 2.8	▼ 3.2	▼ 1.5
▼ 30.6	▼ 28.5	▼ 30.9	▼ 33.0
Latest	Latest	Latest	Latest
10.9	8.6	8.8	15.9
▼ 9.1	▲ 8.5	▼ 8.9	▼ 9.7

In sum: Clocktower is the only local care network with lower rates than England in the 2021 Census for older people living alone and related frailty risk factors (blue figures in the table).

Recent trend

▲ Increasing (change from previous Census)
▶ No change
▼ Decreasing (change from previous Census)

Clocktower is estimated to have the second highest prevalence of frailty in Bexley

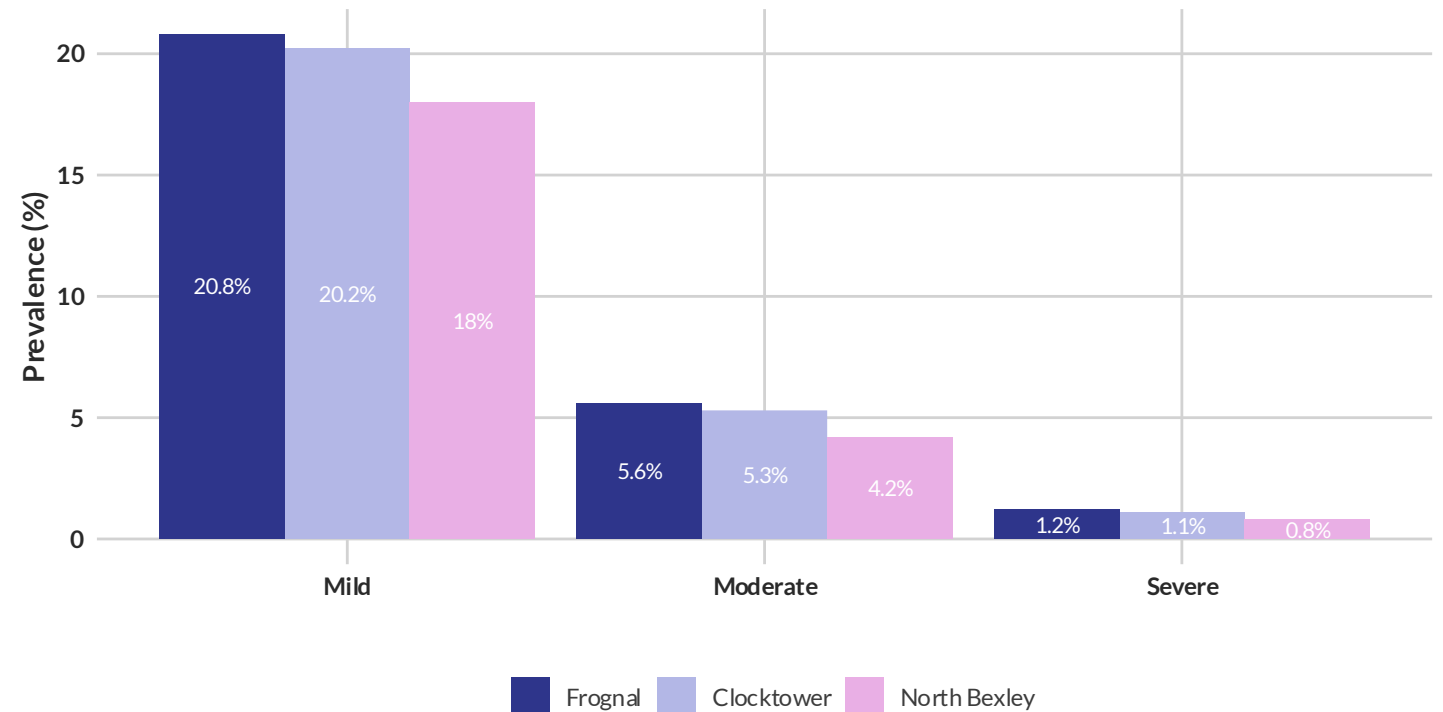
By applying robust research¹ based prevalence estimates to the age and sex structure of the Bexley population, it is possible to estimate the overall prevalence of frailty in each local care network.

Clocktower is estimated to have the second highest prevalence of frailty in residents aged 50+ in all severity categories:

- Over 1 in 5 residents 50+ with mild frailty
- Over 1 in 20 residents 50+ with moderate frailty
- Over 1 in 100 residents 50+ with severe frailty

Estimated frailty prevalence by severity, age 50+

Bexley Local Care Networks



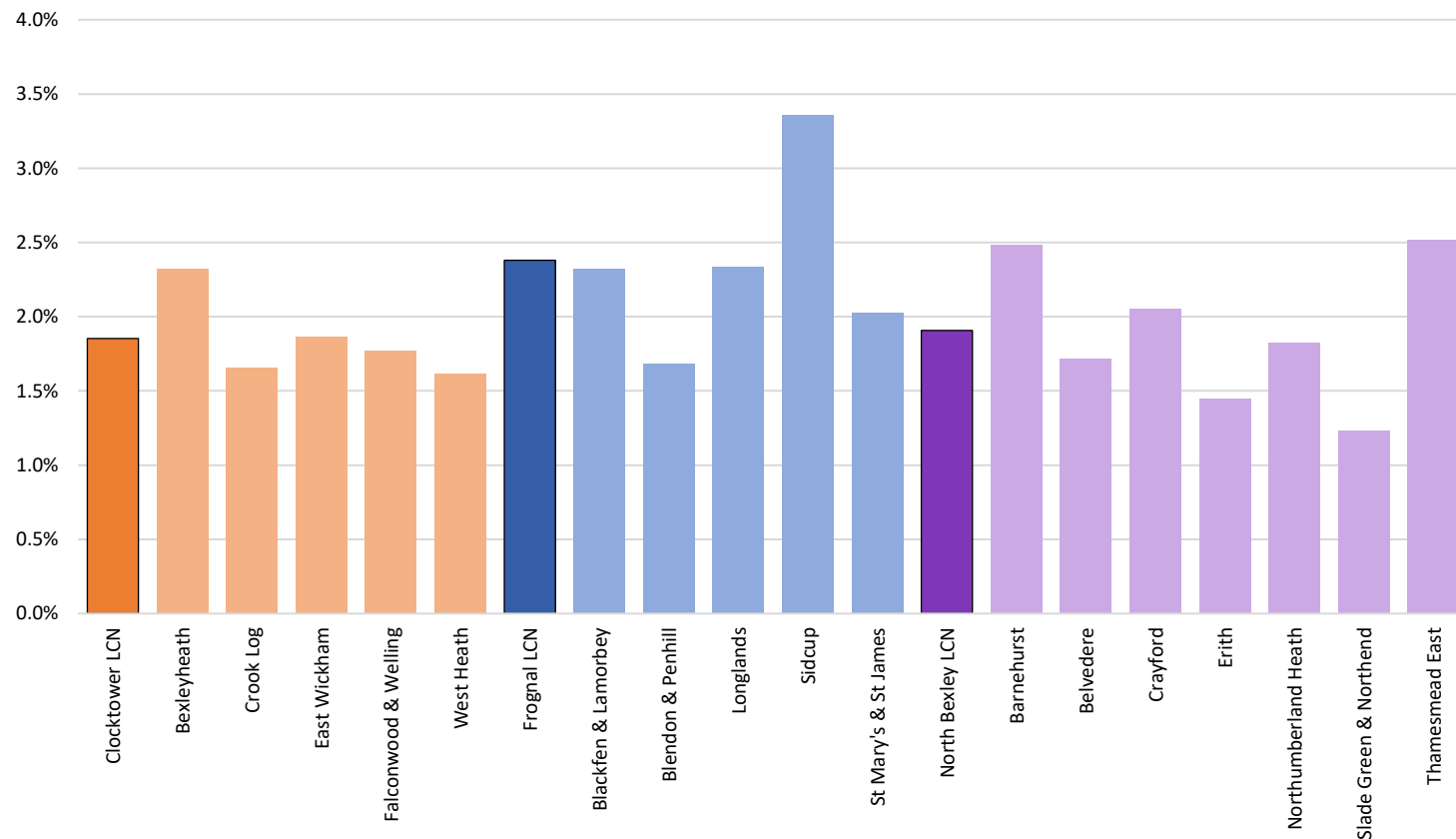
Source: Oxford RCOG, ONS

¹Walsh et al. Age and Ageing, Volume 52, Issue 5, May 2023, afad058,

The rate of emergency admissions for falls in Clocktower corroborates with lower levels of deprivation and estimated levels of frailty

In 2023/24 Clocktower had the lowest rates of emergency admissions for falls in the borough, although Bexleyheath has a higher rate of any ward in this area.

Rate of emergency hospital admissions for falls in ages 65+ (per 100 population) by LCN & Ward, 2023/24



Address

2 Watling Street

Bexleyheath

DA6 7AT

Contact

+44 (0) 207 123 4567

info@bexleywellbeing.org

bexleywellbeing.org